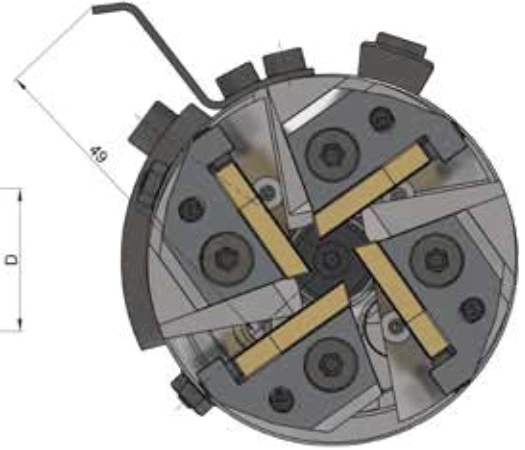
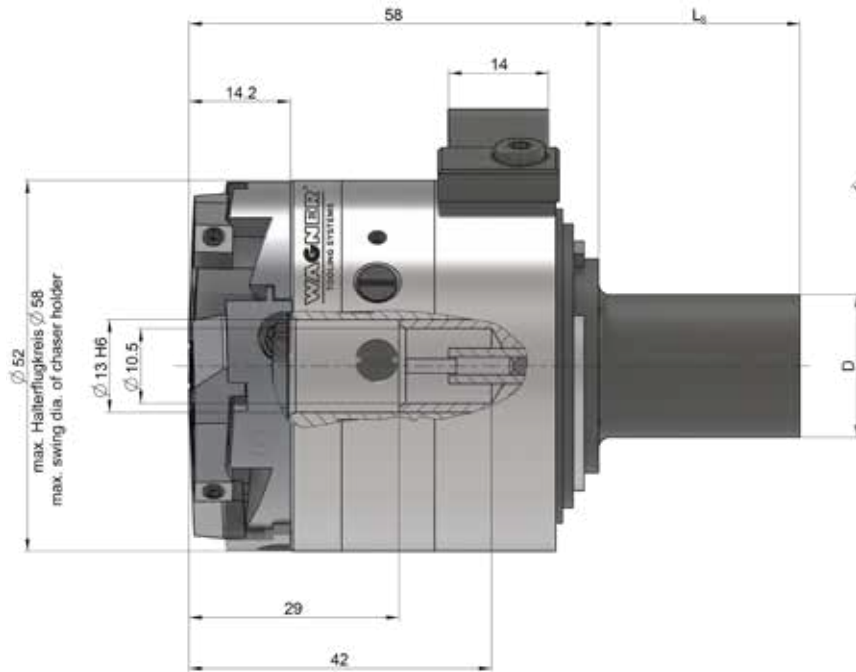


## Thread cutting system ZA12

Compact stationary design



### Thread cutting system compact ZA12

Weight 0.8 kg

	mm	inch
Working range $\varnothing$	1.6–16	0.063–0.591
Max. pitch	1.75	16 t.p.i.
Chaser holder	see holder tables	

### Accessories:

Setting device with dial gauge



### Fixed shanks ZA12

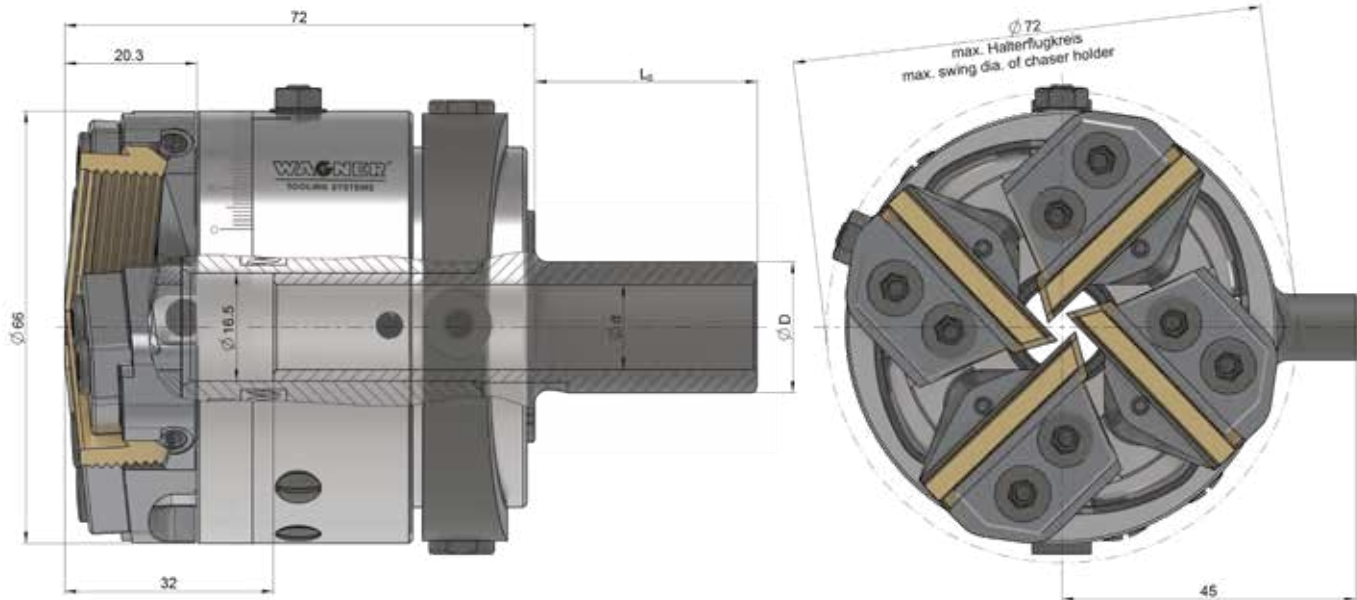
Shank- $\varnothing$ D mm (inch)	Length L <sub>s</sub> mm	Internal stop
12	30	yes
15.875 (5/8")	30	yes
16	30	yes
19.05 (3/4")	37	yes
20	30	yes

### Feed compensation shanks ZA12

Shank- $\varnothing$ D mm (inch)	Length L <sub>s</sub> mm	Internal stop
15.875 (5/8")	32	yes
19.05 (3/4")	37	yes
20	37	yes

## Thread cutting system ZA16

Compact stationary design



### Thread cutting system compact ZA16

Weight 1.7 kg

	mm	inch
Working range $\varnothing$	2.5–24	0.098–0.787
Max. pitch	2	13 t.p.i.
Chaser holder	see holder tables	

### Accessories:

Setting device with dial gauge

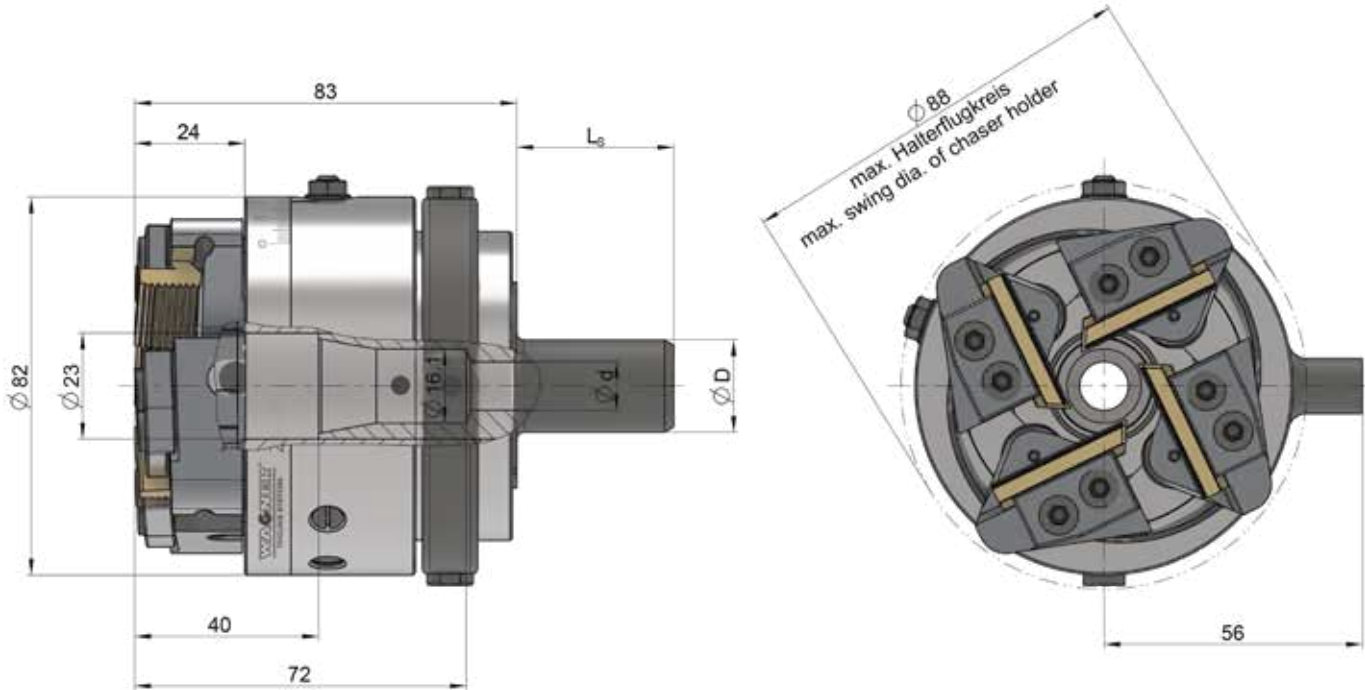


### Fixed shanks ZA16

Shank- $\varnothing$ D mm (inch)	Length $L_s$ mm	d mm	Internal stop	Max. thread length mm
15.875 (5/8")	30	6.4	–	up to $\varnothing$ 6: unlimited
16	34	–	yes	up to $\varnothing$ 10: 51
19.05 (3/4")	34	–	yes	up to $\varnothing$ 10: 51
19.05 (3/4")	42	13	–	up to $\varnothing$ 13: unlimited
20	34	–	yes	up to $\varnothing$ 10: 51
20	34	13	–	up to $\varnothing$ 13: unlimited
20	50	–	yes	up to $\varnothing$ 10: 51
22	42	14.2	–	up to $\varnothing$ 14: unlimited
25	72	10.5	–	up to $\varnothing$ 10: 51
25	42	–	yes	up to $\varnothing$ 10: 51
25	42	13	–	up to $\varnothing$ 13: unlimited
25.4 (1")	50	12	yes	up to $\varnothing$ 12: 51
25.4 (1")	50	12	–	up to $\varnothing$ 12: unlimited

## Thread cutting system ZA22

Compact stationary design



### Thread cutting system compact ZA22

Weight 2.8 kg

### Accessories:

Setting device with dial gauge

	mm	inch
Working range $\varnothing$	4–38	0.157–1.496
Max. pitch	2.5	10 t.p.i.
Chaser holder	see holder tables	

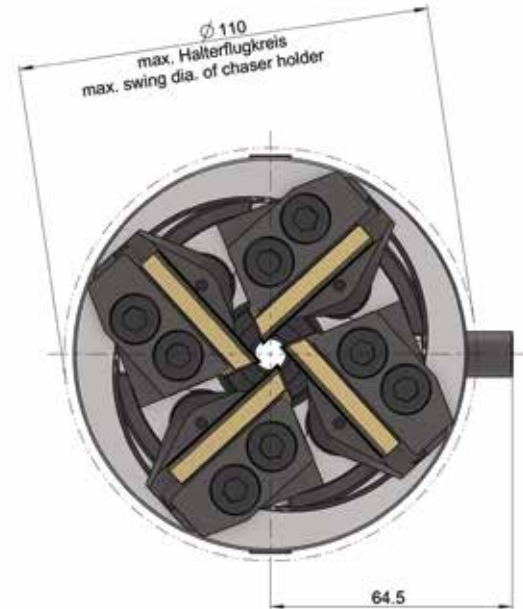
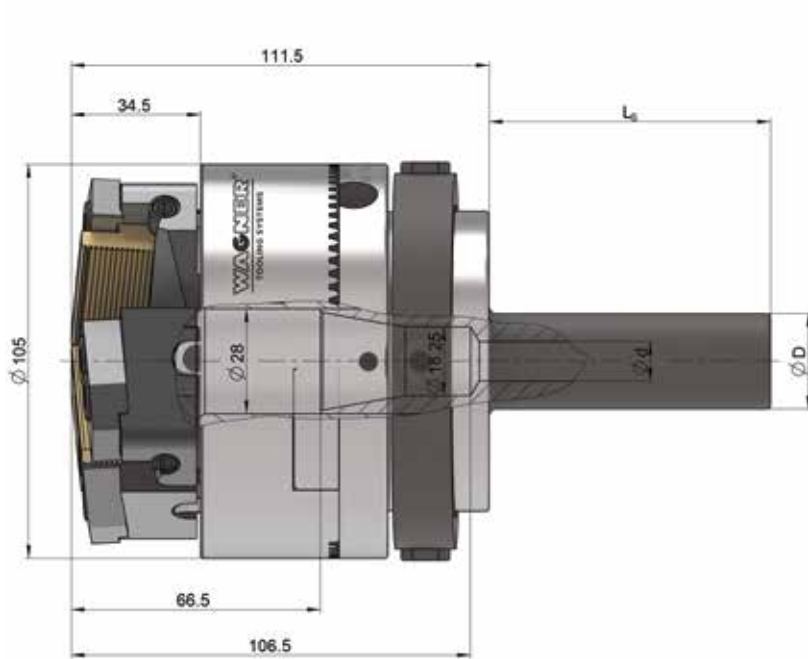
### Fixed shanks ZA22

Shank- $\varnothing$ D mm (inch)	Length $L_s$ mm	d mm	Internal stop	Max. thread length mm
16	42	10	yes	up to $\varnothing$ 16: 72
19.05 (3/4")	42	10	yes	up to $\varnothing$ 16: 72
20	50	10	yes	up to $\varnothing$ 16: 72
20	50	13	–	up to $\varnothing$ 13: unlimited
25	50	16	yes	up to $\varnothing$ 16: unlimited
25.4 (1")	50	16	yes	up to $\varnothing$ 16: unlimited
25.4 (1")	70	16	yes	up to $\varnothing$ 16: unlimited
30	50	16	yes	up to $\varnothing$ 16: unlimited
32	80	16	–	up to $\varnothing$ 16: unlimited
VDI20	40	16	–	up to $\varnothing$ 16: 71
VDI30	55	16	–	up to $\varnothing$ 16: 71
VDI40	63	16	–	up to $\varnothing$ 16: 71



## Thread cutting system ZA27

Compact stationary design



### Thread cutting system compact ZA27

Weight 6.8 kg

	mm	inch
Working range $\varnothing$	5–60	0.197–2.362
Max. pitch	3	9 t.p.i.
Chaser holder	see holder tables	

### Accessories:

Setting device with dial gauge

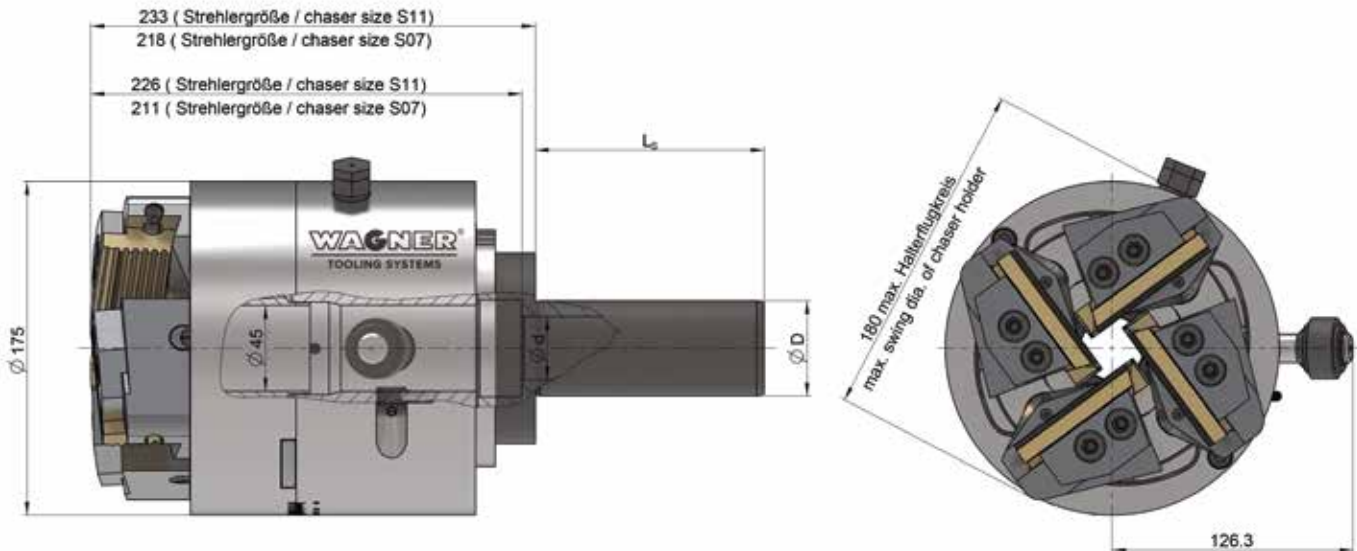


### Fixed shanks ZA27

Shank- $\varnothing$ D mm (inch)	Length $L_s$ mm	d mm	Internal stop	Max. thread length mm
25.4 (1")	75	10.5	yes	up to $\varnothing 10,5$ : unlimited
30	75	18	yes	up to $\varnothing 18$ : unlimited
30	75	22.5	–	up to $\varnothing 22,5$ : unlimited
31.75 (1¼")	75	18	yes	up to $\varnothing 18$ : unlimited
38.1 (1½")	75	18	yes	up to $\varnothing 18$ : unlimited
32	75	18	yes	up to $\varnothing 18$ : unlimited
32	75	25	–	up to $\varnothing 25$ : unlimited
34	75	22.5	–	up to $\varnothing 22,5$ : unlimited
VDI30	70	18.5	–	up to $\varnothing 18$ : 103.5
VDI40	78	18	–	up to $\varnothing 18$ : 91.5

## Thread cutting system ZE39

Standard stationary design



### Thread cutting system standard ZE39

Weight 32 kg

	mm	inch
Working range $\varnothing$	8–80	0.315–3.15
Max. pitch	4	8 t.p.i.
Chaser holder	see holder tables	

### Accessories:

Setting device with dial gauge

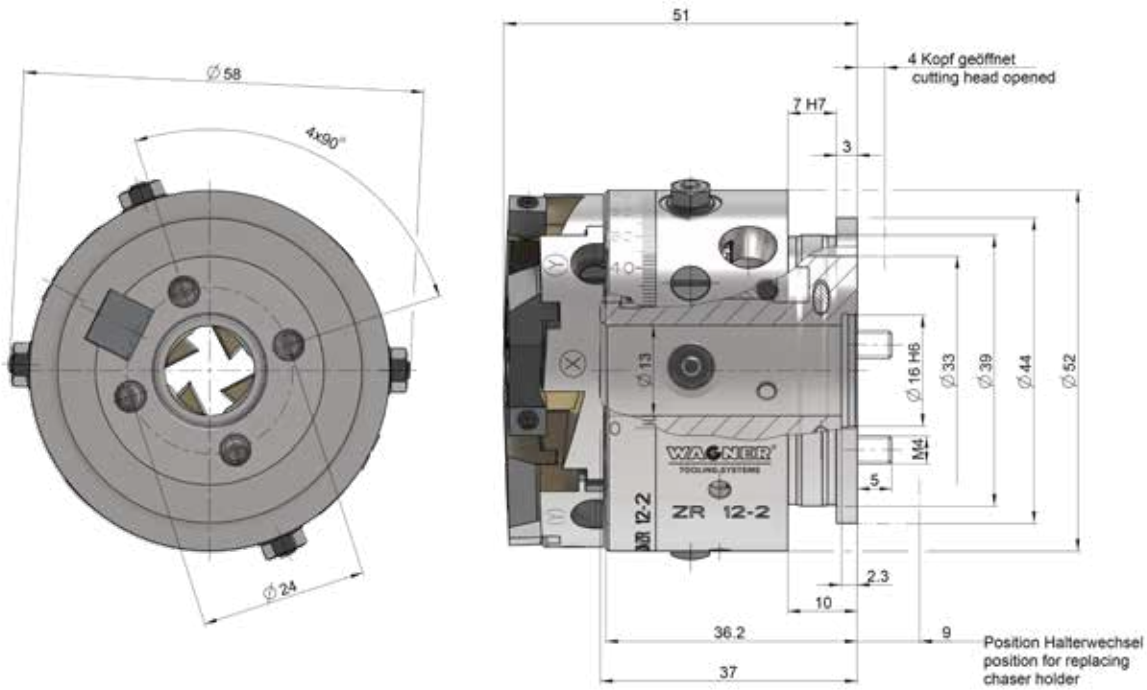


### Fixed shanks ZE39

Shank- $\varnothing$ D mm	Length $L_s$ mm	d mm
32	75	15
40	120	30
50	120	39.5
60	120	48.4
VDI30	55	16.2
VDI40	63	25
VDI50	78	32

## Thread cutting system ZR12-2

Compact rotating design



### Thread cutting system compact ZR12-2

Weight 0.6 kg

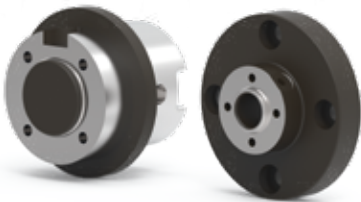
	mm	inch
Working range $\varnothing$	1.6–16	0.063–0.63
Max. pitch	1.75	16 t.p.i.
Chaser holder	see holder tables	

#### Accessories:

Shanks and flanges on request

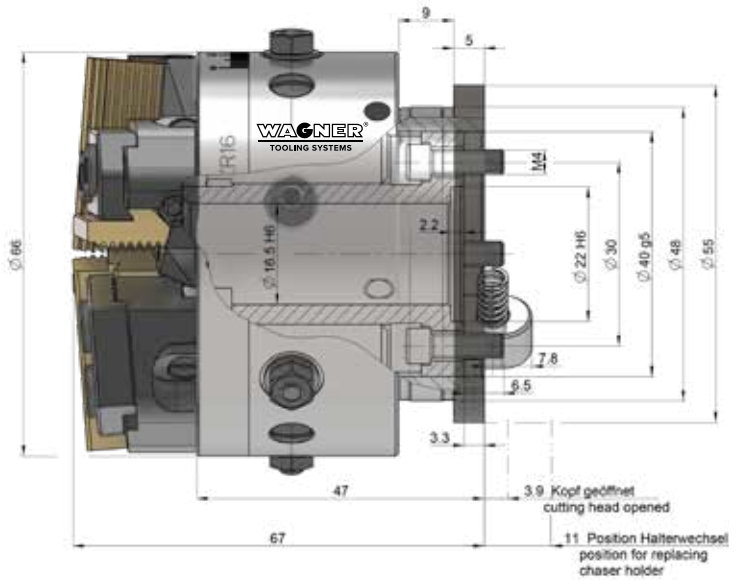
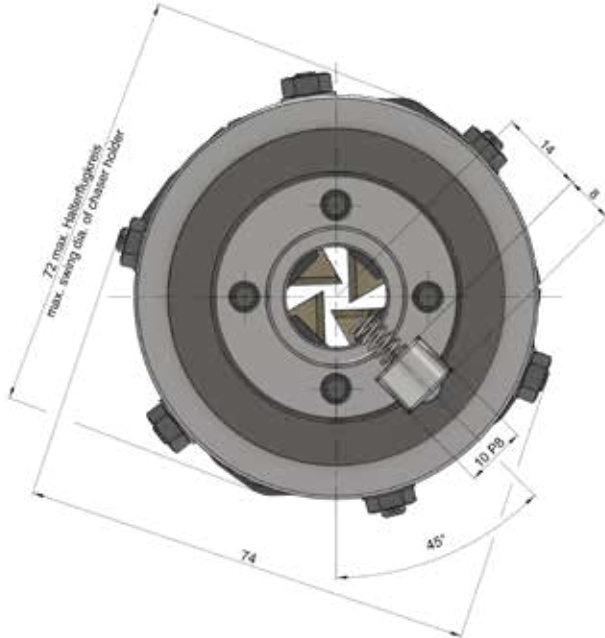
#### Accessories:

Setting device with dial gauge



## Thread cutting system ZR16-2

Compact rotating design



### Thread cutting system compact ZR16-2

Weight 1.7 kg

	mm	inch
Working range $\varnothing$	2.5–24	0.098–0.787
Max. pitch	2	13 t.p.i.
Chaser holder	see holder tables	

### Accessories:

Setting device with dial gauge

### Accessories:

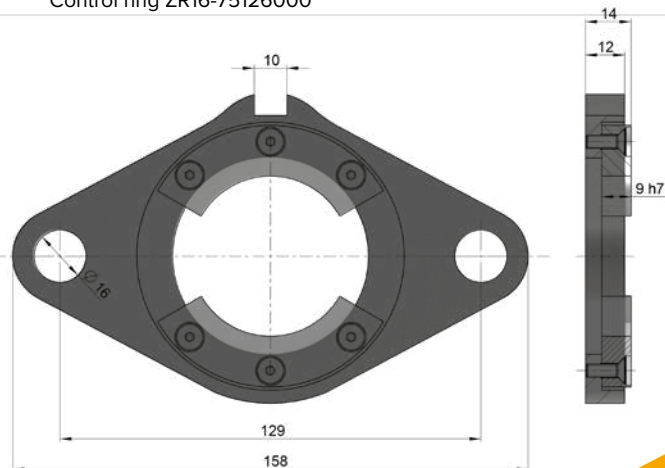
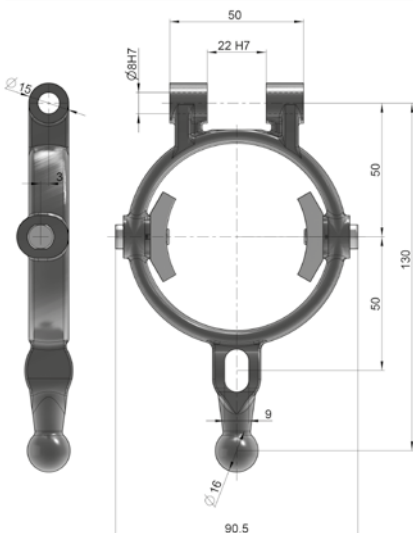
Shanks and flanges on request



### Accessories:

Control ring ZR16-70252800

Control ring ZR16-75126000

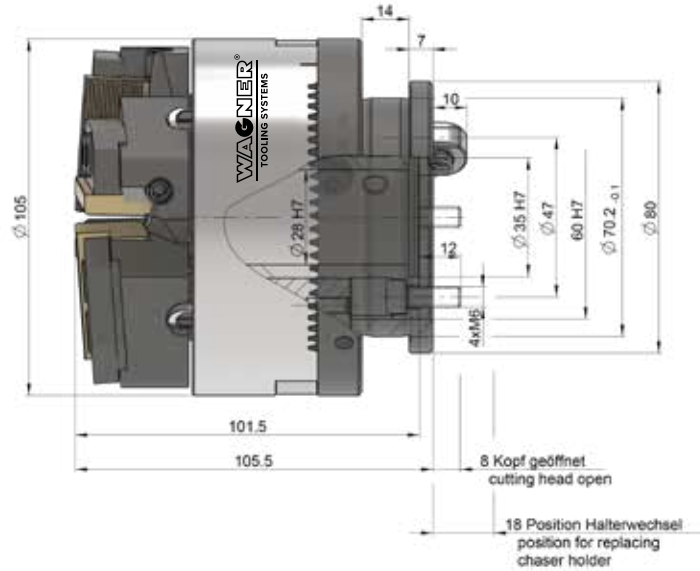
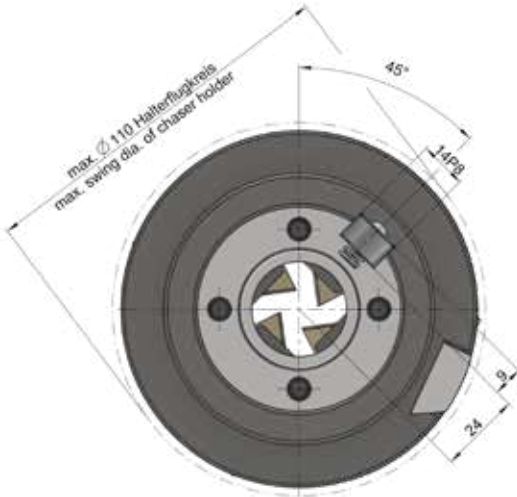






## Thread cutting system ZR27-2

Compact rotating design



### Thread cutting system Compact ZR27-2

Weight 6.2 kg

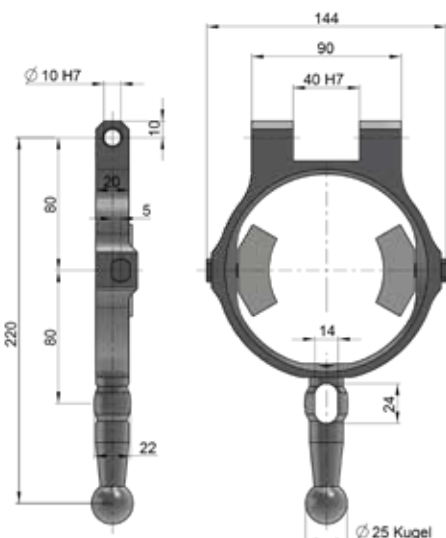
	mm	inch
Working range $\varnothing$	5–60	0.197–2.362
Max. pitch	3	9 t.p.i.
Chaser holder	see holder tables	

### Accessories:

Control ring ZR27-2-70252300

### Accessories:

Toothed segments ZR27-2 (set = 10 pieces)



Toothed segments ensure an interlocking connection between the guide ring and the eccentric ring, thus preventing unintentional adjustment of the machining diameter.

Toothed segments are mainly used when the cutting systems are used in a reversing manner or the tool spindles are stopped abruptly after thread cutting.

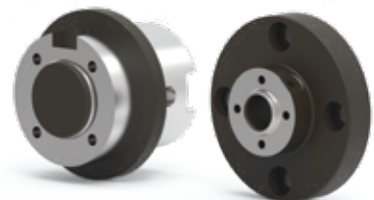
### Accessories:

Setting device with dial gauge



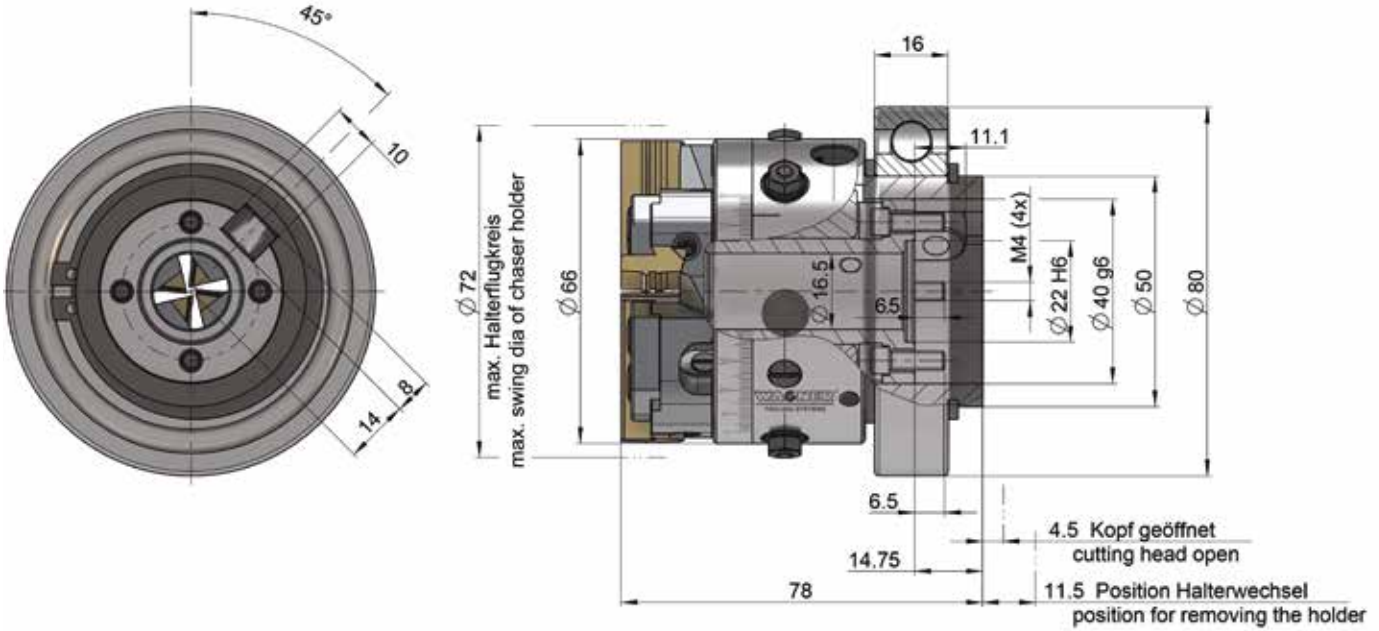
### Accessories:

Shanks and flanges on request



## Profile-cutting system ZR16-E

Rotating design for  
profile cutting applications



### Axial cutting system for grooving operations ZR16-E

Weight 2 kg

	mm	inch
Working range Minor Ø	0–16.8	0–0.66

Chaser holder	Working range Minor Ø mm (inch)	Max. Profil depth (radial) mm (inch)
ZR16/D-0,00 KD0-6.5	0–6.5 (0–0.256)	1.6 (0.063)
ZR16/D-0,00 KD5-11.5	5–11.5 (0.197–0.453)	1.6 (0.063)
ZR16/D-0,00 KD10-16.8	10–16.8 (0.394–0.66)	1.75 (0.069)

Profile cutting knives and insert holders on request

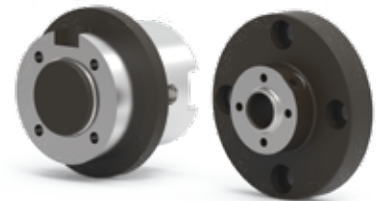
### Accessories:

Setting device with dial gauge



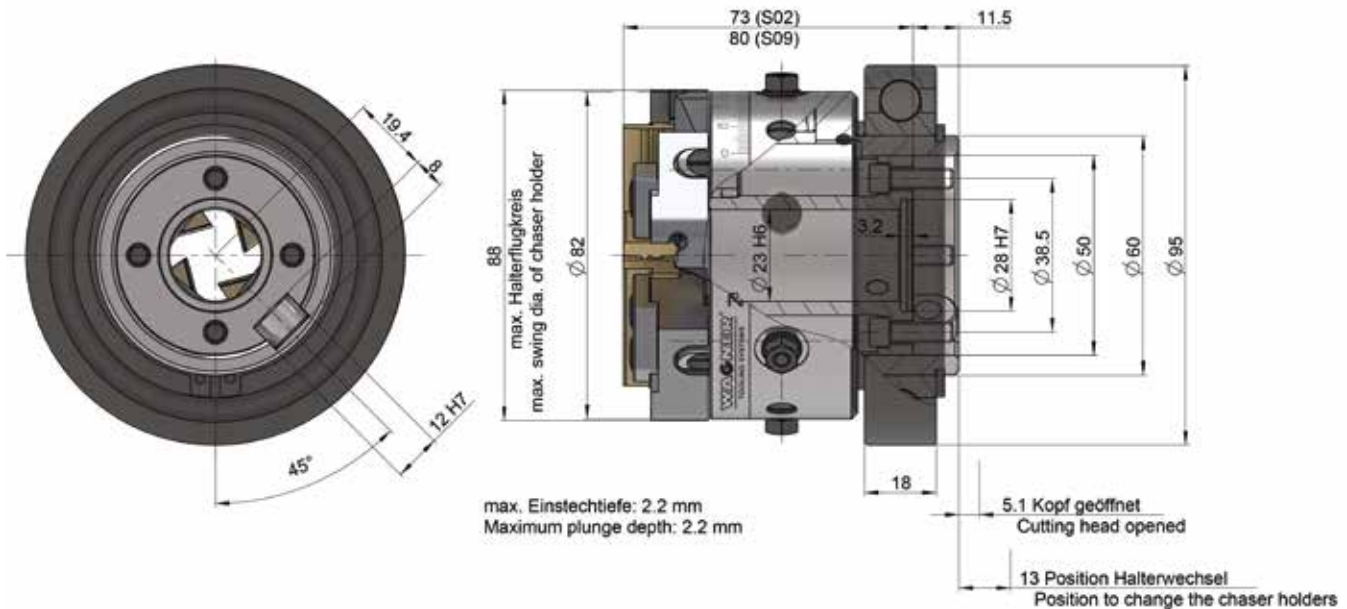
### Accessories:

Shanks and flanges on request



## Profile-cutting system ZR22-E

Rotating design for  
profile cutting applications



### Axial cutting system for grooving operations ZR22-E

Weight 3 kg

	mm	inch
Working range Minor Ø	1.7–26	0.067–1.024

Chaser holder	Working range Minor Ø mm (inch)	Max. Profil depth (radial) mm (inch)
ZR22/D-0.00 KD1-11.7	1.7–11.7 (0.067–0.46)	2.3 (0.09)
ZR22/D-0.00 KD4-13.5	4–13.5 (0.157–0.53)	2.2 (0.087)
ZR22/D-0.00 KD8.4-18	8.4–18 (0.33–0.71)	2.0 (0.079)

Profile cutting knives and insert holders on request

### Accessories:

Setting device with dial gauge



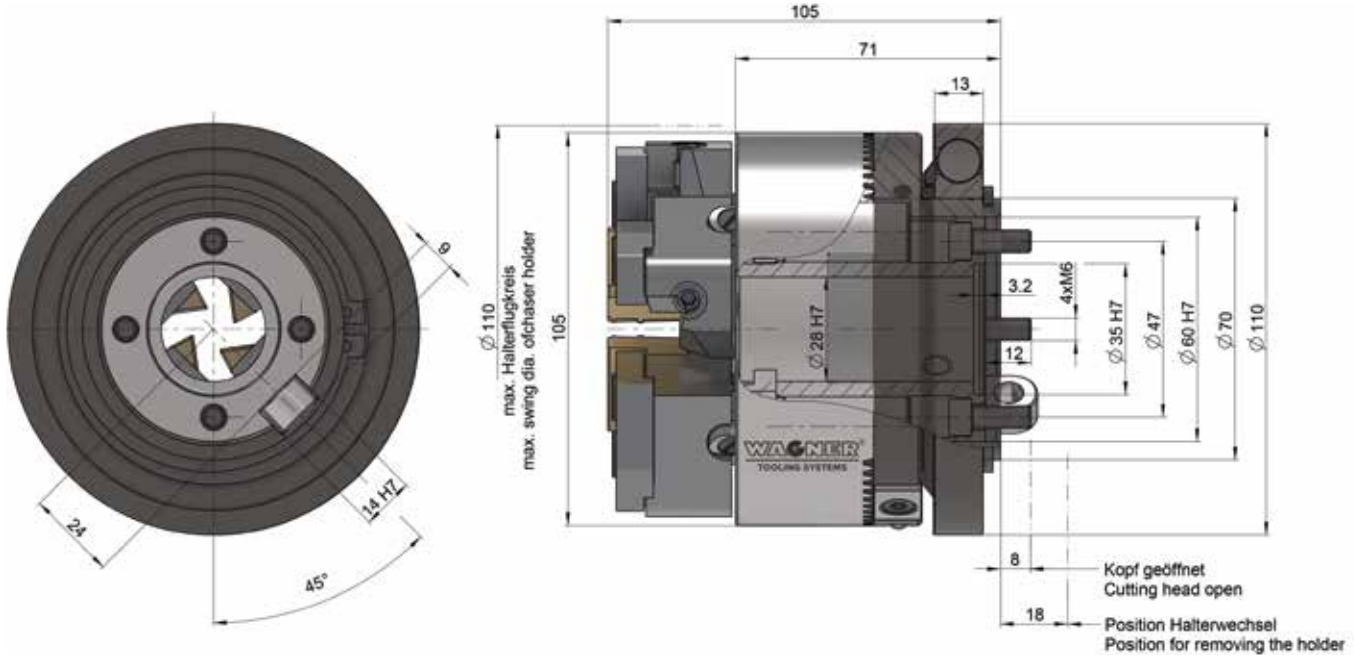
### Accessories:

Shanks and flanges on request



## Profile-cutting system ZR27-E

Rotating design for  
profile cutting applications



### Axial cutting system for grooving operations ZR27-E

Weight 6.2 kg

	mm	inch
Working range Minor Ø	1–35.1	0.04–1.38

Chaser holder	Working range Minor Ø mm (inch)	Max. Profil depth (radial) mm (inch)
ZR27/D-0.00 KD1-11.5	1–11.5 (0.04–0.45)	3.0 (0.12)
ZR27/D-0.00 KD9-19.1	9–19.1 (0.354–0.75)	3.0 (0.12)
ZR27/D-0.00 KD16-26.1	16–26.1 (0.63–1.03)	2.6 (0.102)
ZR27/D-0.00 KD26.1-35.1	26.1–35.1 (1.03–1.38)	2.6 (0.102)

Profile cutting knives and insert holders on request

### Accessories:

Setting device with dial gauge



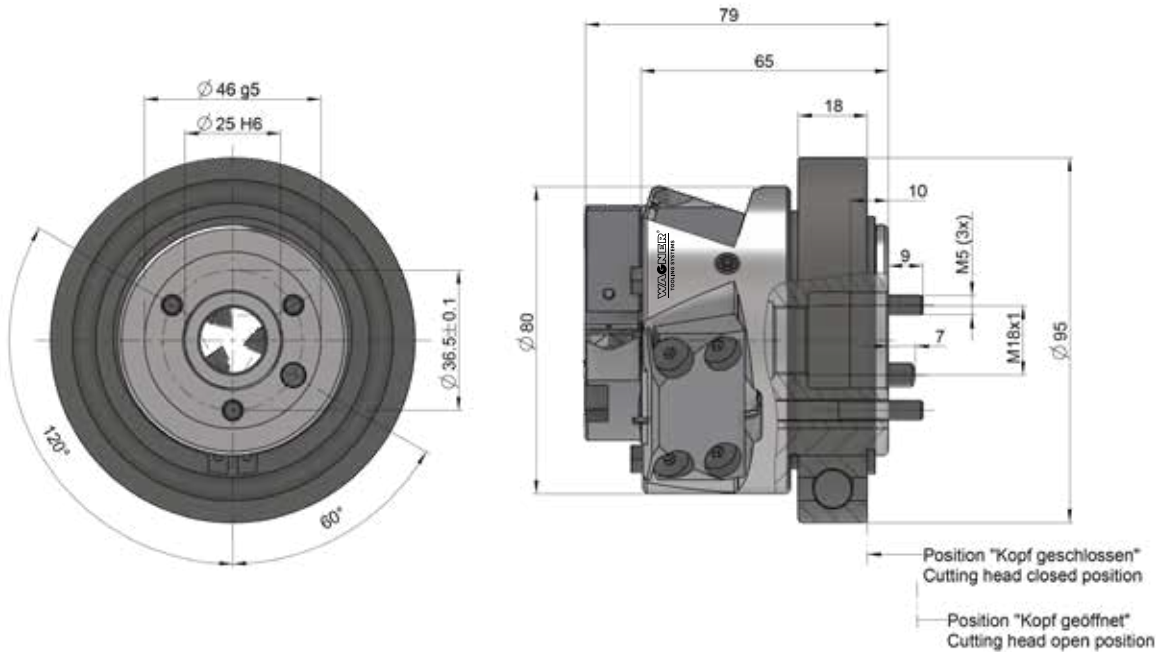
### Accessories:

Shanks and flanges on request



## Profile-cutting system REK-1

Rotating design for  
profile cutting applications



### Axial cutting system for grooving operations REK-1

Weight 2.2 kg

	mm	inch
Working range Minor Ø	0.5–16	0.02–0.63

Item	Working range Minor-Ø mm (inch)	Max. Profil depth (radial) mm (inch)
1	0.5–9 (0.02–0.354)	4.25 (0.167)
2	2.5–11 (0.098–0.28)	
3	4.5–13 (0.177–0.51)	
4	6.5–15 (0.256–0.59)	
5	8.5–17 (0.335–0.67)	

Profile cutting insert holders on request

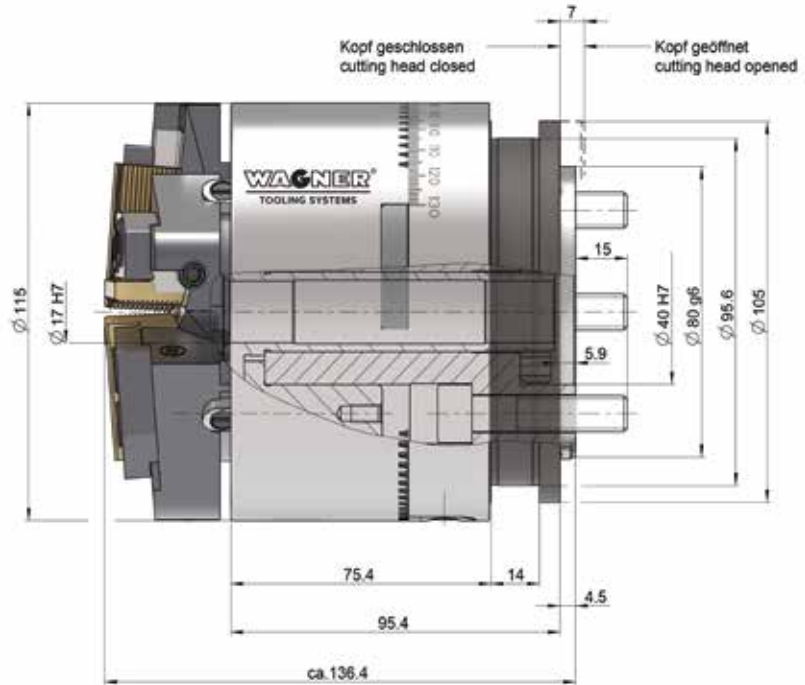
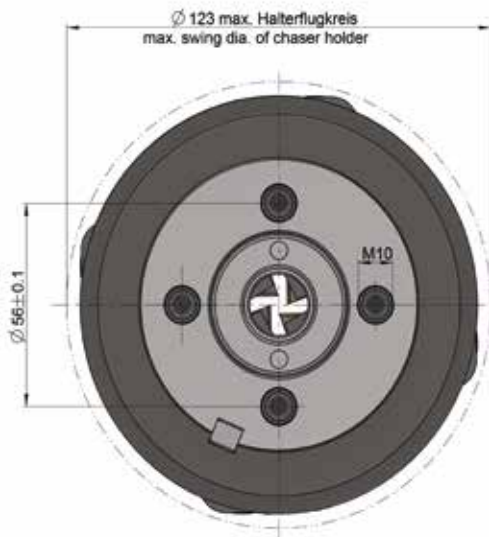
### Accessories:

Shanks and flanges on request



## Thread cutting system Z16-2

Standard rotating design



### Thread cutting system Standard Z16-2

Weight 10 kg

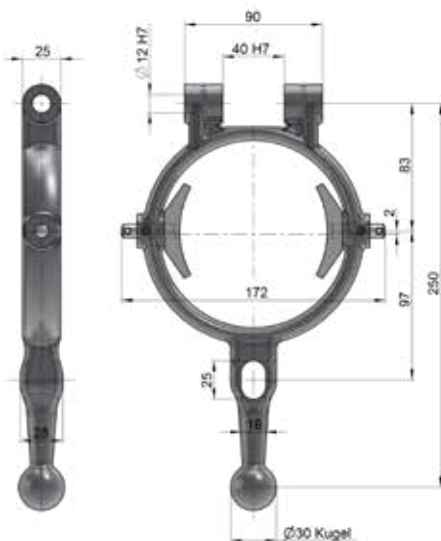
	mm	inch
Working range $\varnothing$	4–45	0.157–1.77
Max. pitch	2.0	13 t.p.i.
Chaser holder	see table for holders	

### Accessories:

Control ring Z16-2-70563700

### Accessories:

Toothed segments Z16-2 (set = 10 pieces)



Toothed segments ensure an interlocking connection between the guide ring and the eccentric ring, thus preventing unintentional adjustment of the machining diameter.

Toothed segments are mainly used when the cutting systems are used in a reversing manner or the tool spindles are stopped abruptly after thread cutting.

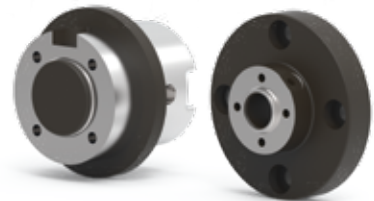
### Accessories:

Setting device with dial gauge



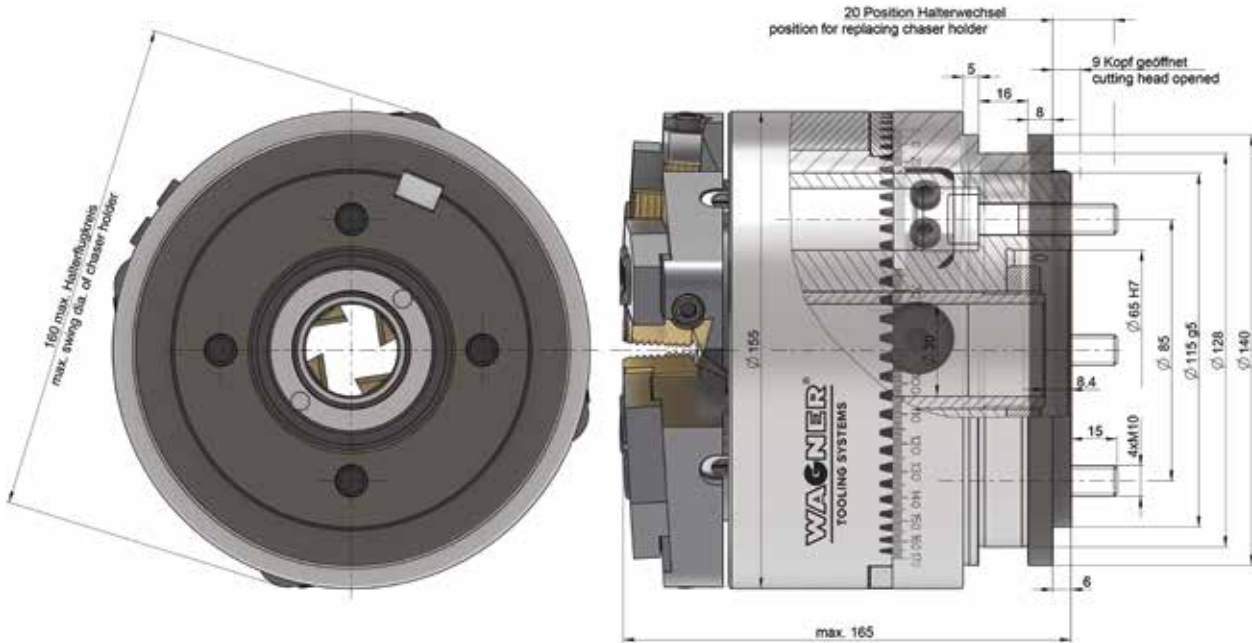
### Accessories:

Shanks and flanges on request



## Thread cutting system Z27-2

Standard rotating design



### Thread cutting system Standard Z27-2

Weight 15 kg

	mm	inch
Working range $\varnothing$	6–60	0,236–2,36
Max. pitch	3.0	8 t.p.i.
Chaser holder	see table for holders	

### Accessories:

Setting device with dial gauge

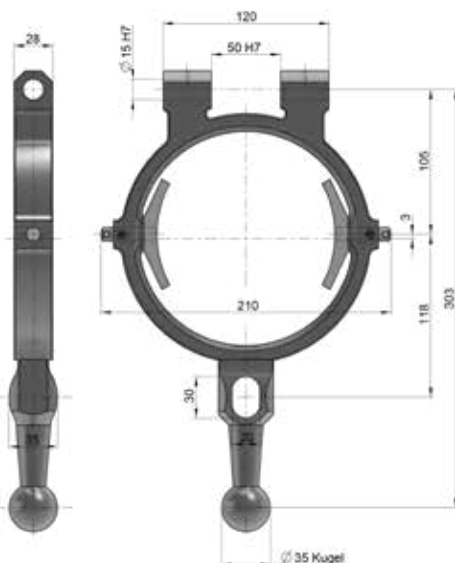


### Accessories:

Control ring Z27-2-70563700

### Accessories:

Toothed segments Z27-2 (set = 10 pieces)



Toothed segments ensure an interlocking connection between the guide ring and the eccentric ring, thus preventing unintentional adjustment of the machining diameter.

Toothed segments are mainly used when the cutting systems are used in a reversing manner or the tool spindles are stopped abruptly after thread cutting.

### Accessories:

Shanks and flanges on request

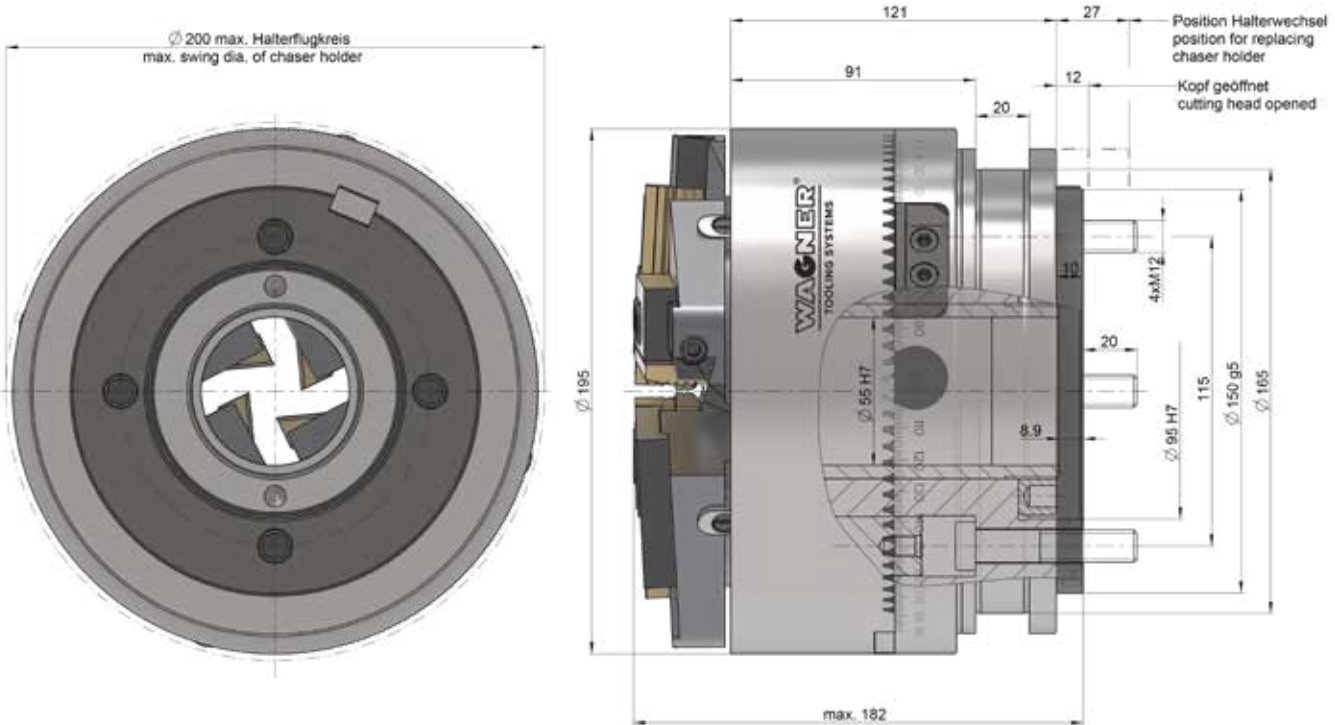






## Thread cutting system Z52-2

Standard rotating design



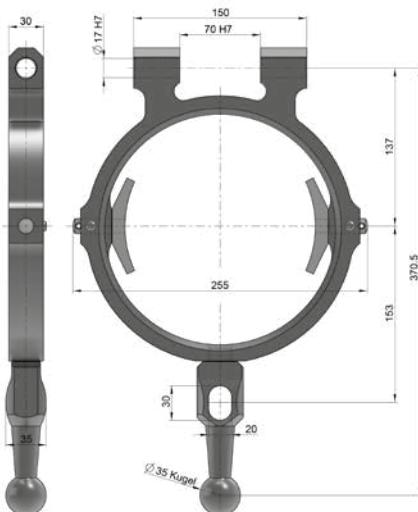
### Thread cutting system Standard Z52-2

Weight 31 kg

	mm	inch
Working range $\varnothing$	8–100	0.315–4
Max. pitch	5.5	4.5 t.p.i.
Chaser holder	see table for holders	

### Accessories:

Control ring Z52-2/Z64-2



### Accessories:

Toothed segments Z52-2 (set = 10 pieces)



Toothed segments ensure an interlocking connection between the guide ring and the eccentric ring, thus preventing unintentional adjustment of the machining diameter.

Toothed segments are mainly used when the cutting systems are used in a reversing manner or the tool spindles are stopped abruptly after thread cutting.

### Accessories:

Setting device with dial gauge



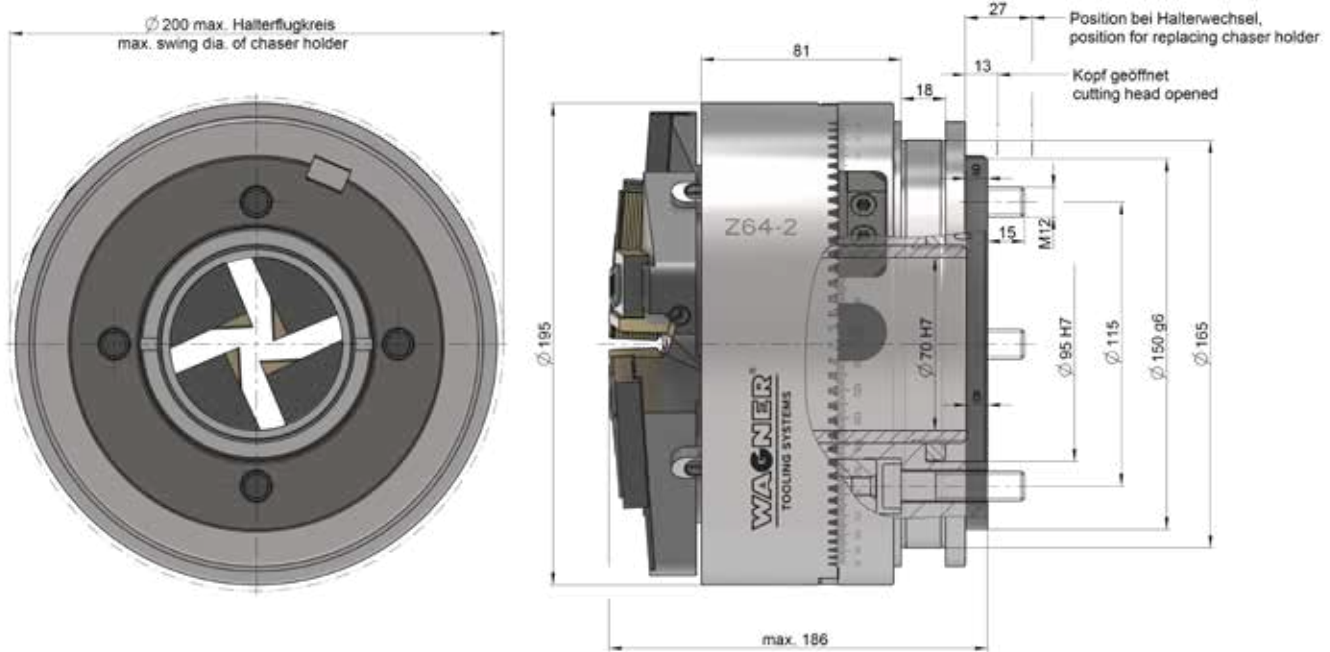
### Accessories:

Shanks and flanges on request



## Thread cutting system Z64-2

Standard rotating design



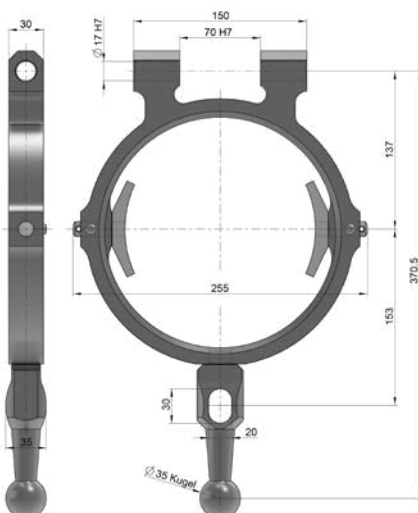
### Thread cutting system Standard Z64-2

Weight 27 kg

	mm	inch
Working range $\varnothing$	8–100	0.315–4
Max. pitch	6.0	4 t.p.i.
Chaser holder	see table for holders	

### Accessories:

Control ring Z52-2/Z64-2



### Accessories:

Toothed segments Z64-2 (set = 10 pieces)



Toothed segments ensure an interlocking connection between the guide ring and the eccentric ring, thus preventing unintentional adjustment of the machining diameter.

Toothed segments are mainly used when the cutting systems are used in a reversing manner or the tool spindles are stopped abruptly after thread cutting.

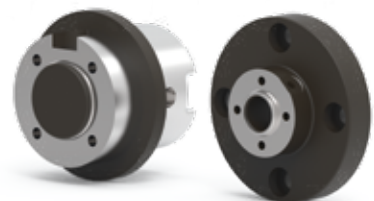
### Accessories:

Setting device with dial gauge



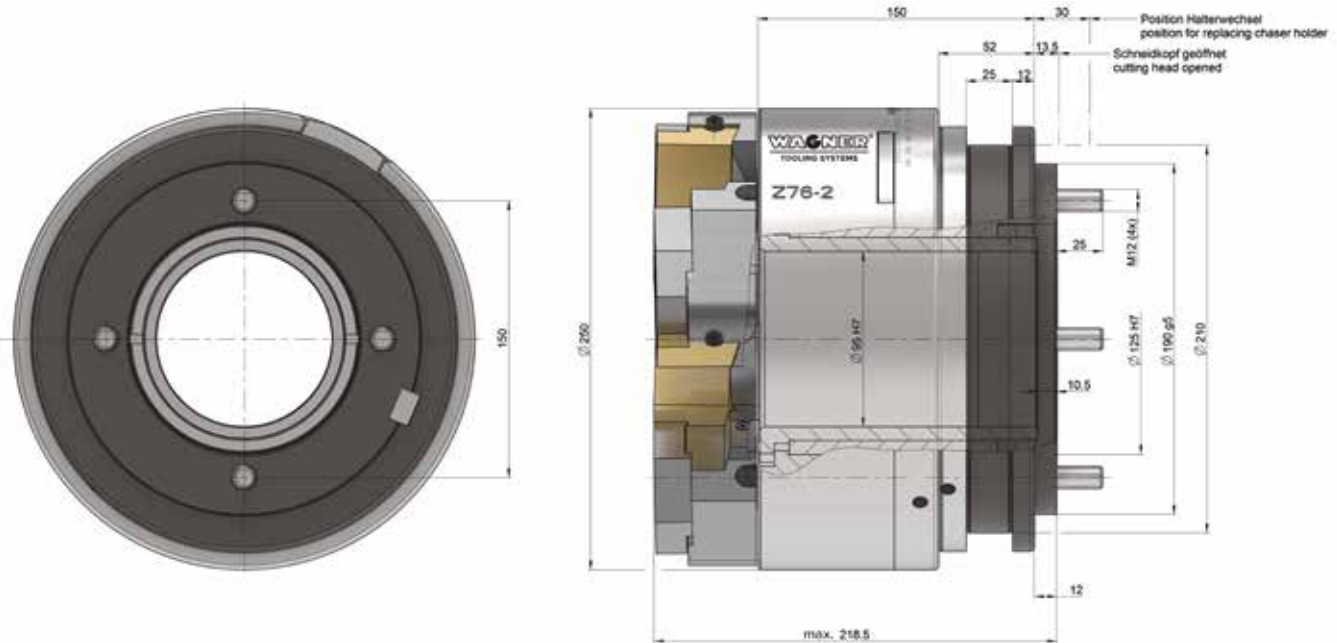
### Accessories:

Shanks and flanges on request



## Thread cutting system Z76-2

Standard rotating design



### Thread cutting system Standard Z76-2

Weight 50 kg

	mm	inch
Max. pitch	3.125	8 t.p.i.
Working range $\varnothing$	R1–4" 1-11.5–4-8NPT	
Chaser holder	see table for holders	

### Accessories:

Setting device with dial gauge



### Accessories:

Toothed segments Z76-2 (set = 10 pieces)



Toothed segments ensure an interlocking connection between the guide ring and the eccentric ring, thus preventing unintentional adjustment of the machining diameter.

Toothed segments are mainly used when the cutting systems are used in a reversing manner or the tool spindles are stopped abruptly after thread cutting.

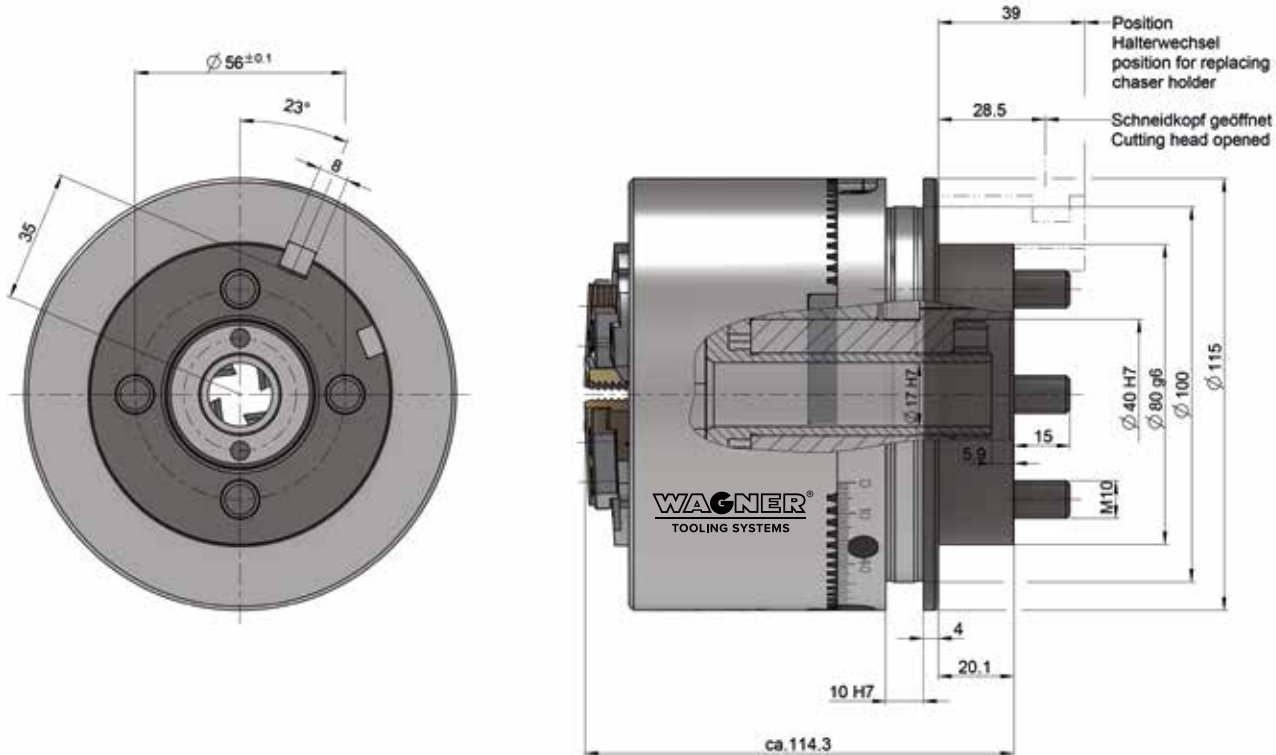
### Accessories:

Shanks and flanges on request



## Thread cutting system Z16-GK-2

Design for  
tapered threads



### Thread cutting system for tapered threads Z16-GK-2

Weight 7 kg

	mm	inch
Working range nominal $\varnothing$	8–25.4	0.315–1
Max. pitch	2	13 t.p.i.
Tapered thread length	26	1.02
Eccentric rings and chaser holders	see table for holders	

### Accessories:

Toothed segments Z16-GK (set = 10 pieces)



Toothed segments ensure an interlocking connection between the guide ring and the eccentric ring, thus preventing unintentional adjustment of the machining diameter.

Toothed segments are mainly used when the cutting systems are used in a reversing manner or the tool spindles are stopped abruptly after thread cutting.

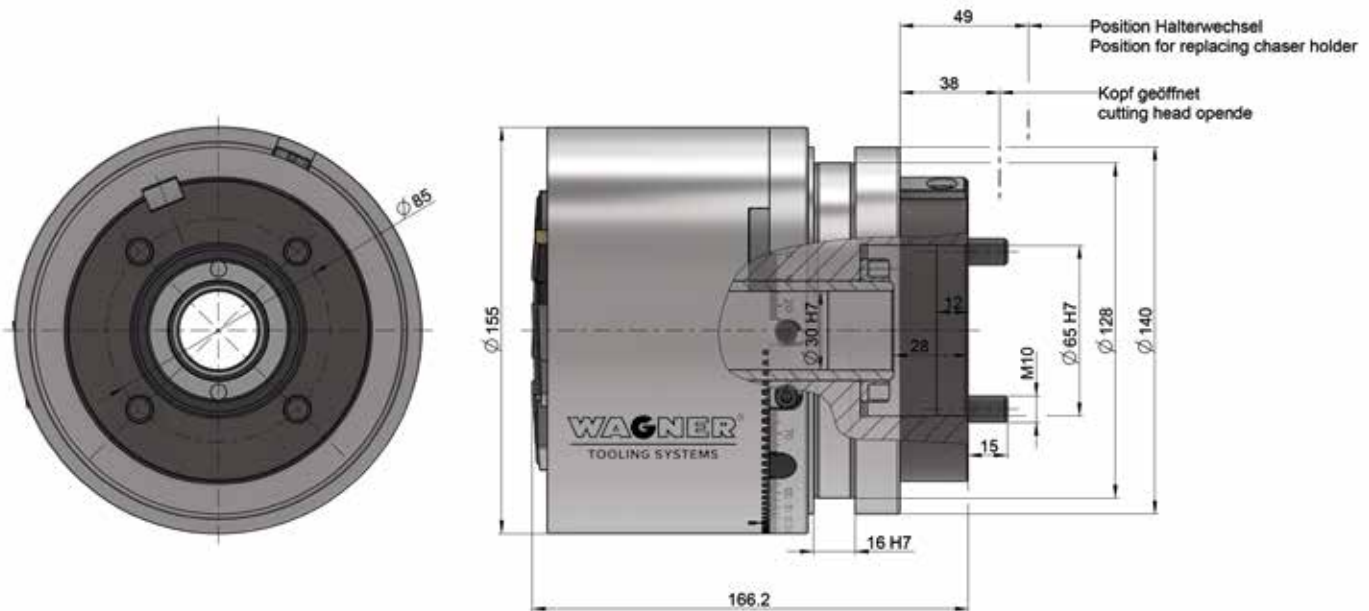
### Accessories:

Setting device with dial gauge



## Thread cutting system Z27-GK-2

Design for  
tapered threads



### Thread cutting system for tapered threads Z27-GK-2

Weight 15 kg

	mm	inch
Working range nominal $\varnothing$	8–45	0.315–1.77
Max. pitch	2.5	10 t.p.i.
Tapered thread length	32	126
Eccentric rings and chaser holders	see table for holders	

### Accessories:

Toothed segments Z27-GK (set = 10 pieces)



Toothed segments ensure an interlocking connection between the guide ring and the eccentric ring, thus preventing unintentional adjustment of the machining diameter.

Toothed segments are mainly used when the cutting systems are used in a reversing manner or the tool spindles are stopped abruptly after thread cutting.

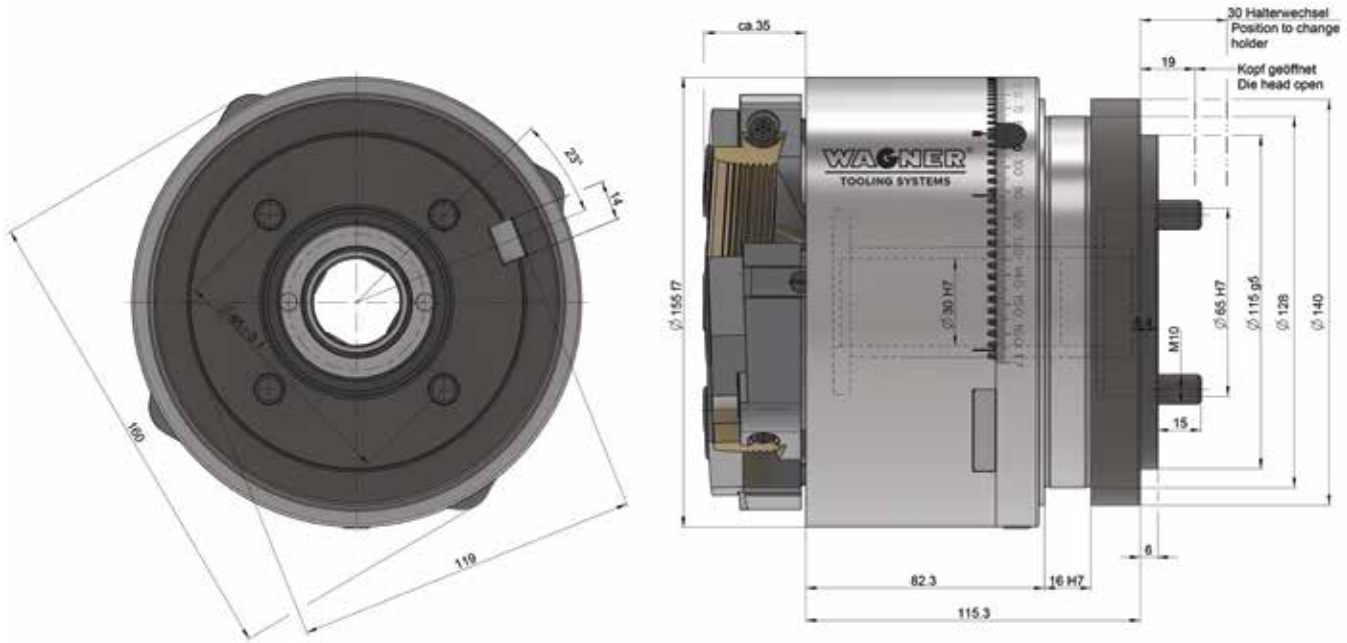
### Accessories:

Setting device with dial gauge



## Thread cutting system Z27-K

Design for  
tapered threads



### Thread cutting system for tapered threads Z27-K

Weight 17 kg

	mm	inch
Max. pitch	2.309	11 t.p.i.
Working range pipe thread	R1/8–1" DIN EN 10226 1/4-18–1-11.5NPT ANSI B1.20.1	
Eccentric rings and chaser holders	see table for holders	

### Accessories:

Setting device with dial gauge



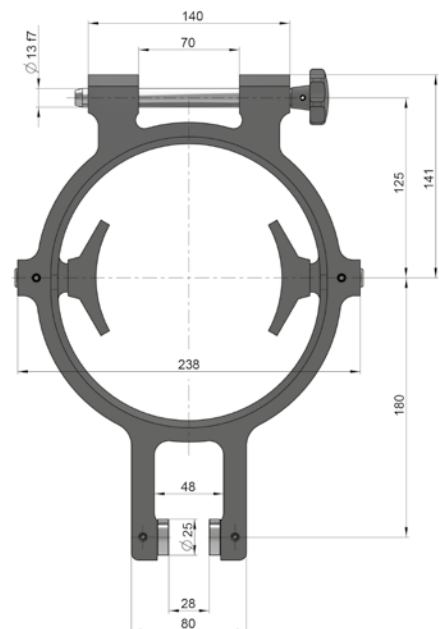
### Accessories:

Shanks and flanges on request



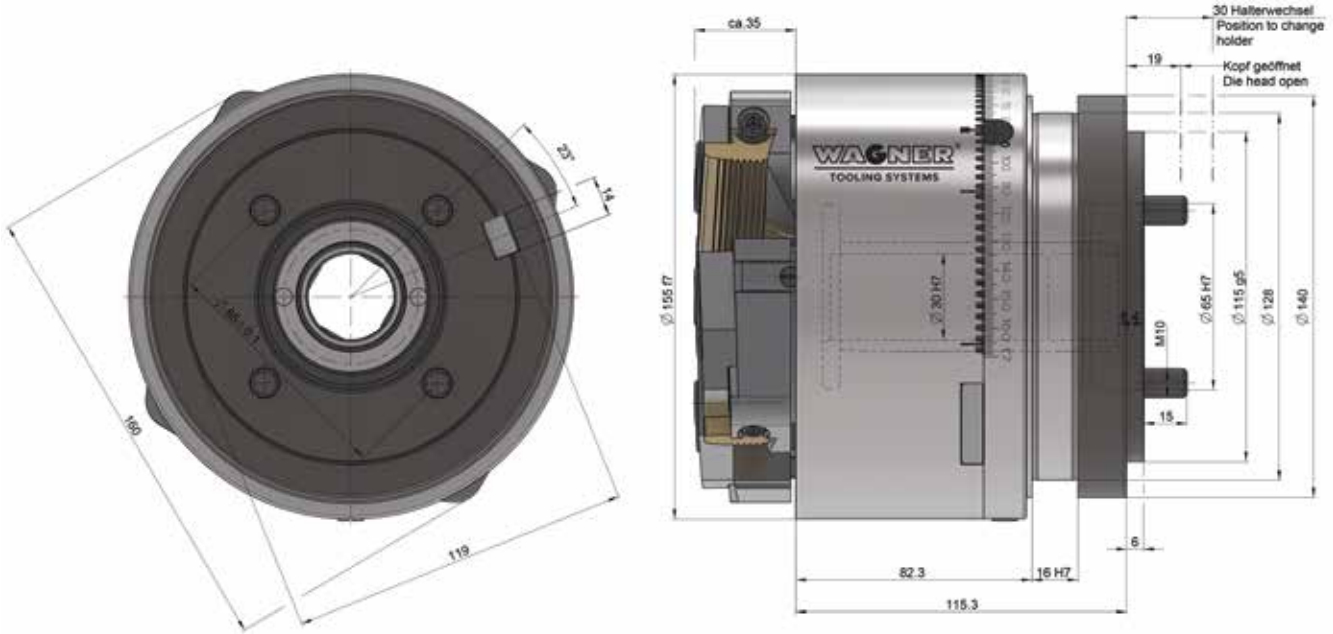
### Accessories:

Control ring Z27K



## Thread cutting system Z39-K-2

Design for  
tapered threads



### Thread cutting system for tapered threads Z39-K-2

Weight 23 kg

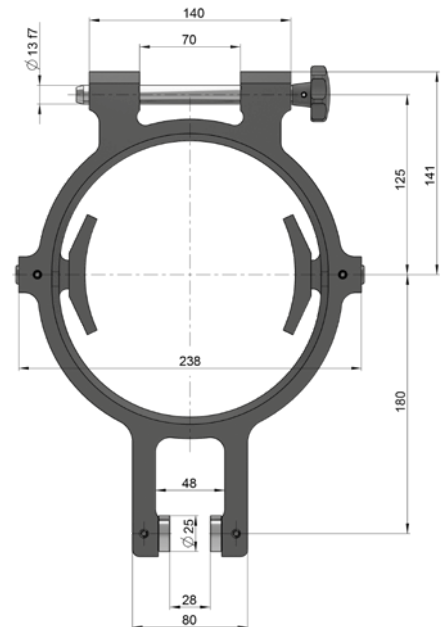
	mm	inch
Max. pitch	2,309	11 t.p.i.

Working range pipe thread	R1/8–2" DIN EN 10226 1/4-18–2 - 11.5NPT ANSI B1.20.1
---------------------------	--

Eccentric rings and chaser holders	see table for holders
------------------------------------	-----------------------

### Accessories:

Control ring Z39-K-2



### Accessories:

Setting device with dial gauge



### Accessories:

Toothed segments Z39-K-2 (set = 10 pieces)

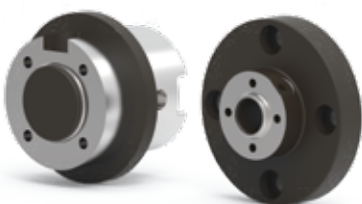


Toothed segments ensure an interlocking connection between the guide ring and the eccentric ring, thus preventing unintentional adjustment of the machining diameter.

Toothed segments are mainly used when the cutting systems are used in a reversing manner or the tool spindles are stopped abruptly after thread cutting.

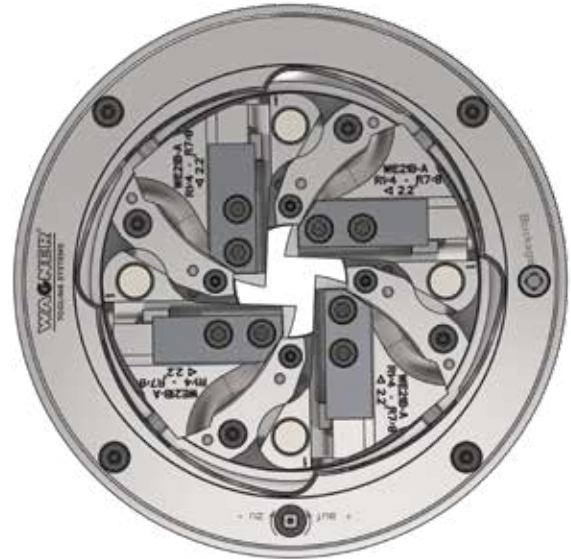
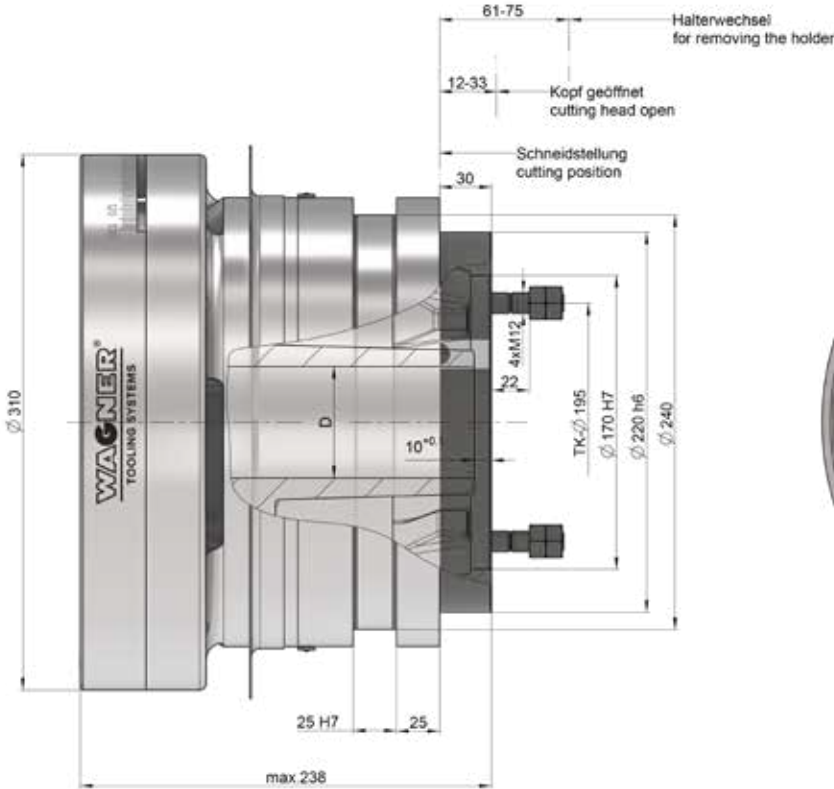
### Accessories:

Shanks and flanges on request



## Thread cutting system WDK-WEK

Heavy duty rotating design



WDK: D = 64,5mm  
WEK: D = 94,5mm

### Thread cutting system Heavy Duty WDK-WEK

Working range $\varnothing$		Weight			
	Metric standard threads Metric fine threads	Whitworth and UN threads	Whitworth pipe threads and NPT threads	Trapezoidal and round threads $\varnothing$	
WDK	M8–M52	3/8–2"	G1/4–2" R1/4–2" 1/4-18–2-11.5NPT	10–44 mm 0.39–1.73"	50 kg
WEK	M8–M52 M16 × 1.5–M88 × 3	3/8–3"	G1/4–3" R1/4–3" K1/16 1/4-18–3-8NPT	10–44 mm 0.39–1.73"	50 kg

Chaser holders see table for holders

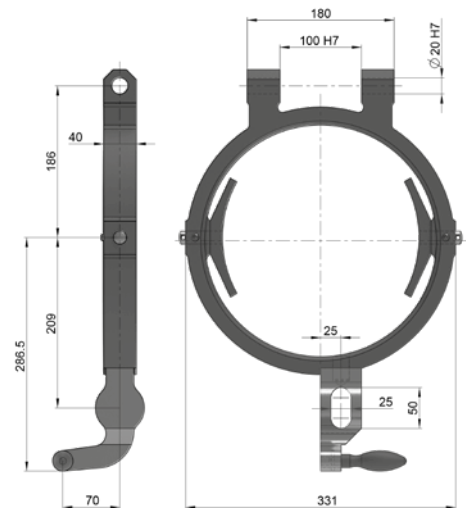
### Accessories:

Setting device with dial gauge



### Accessories:

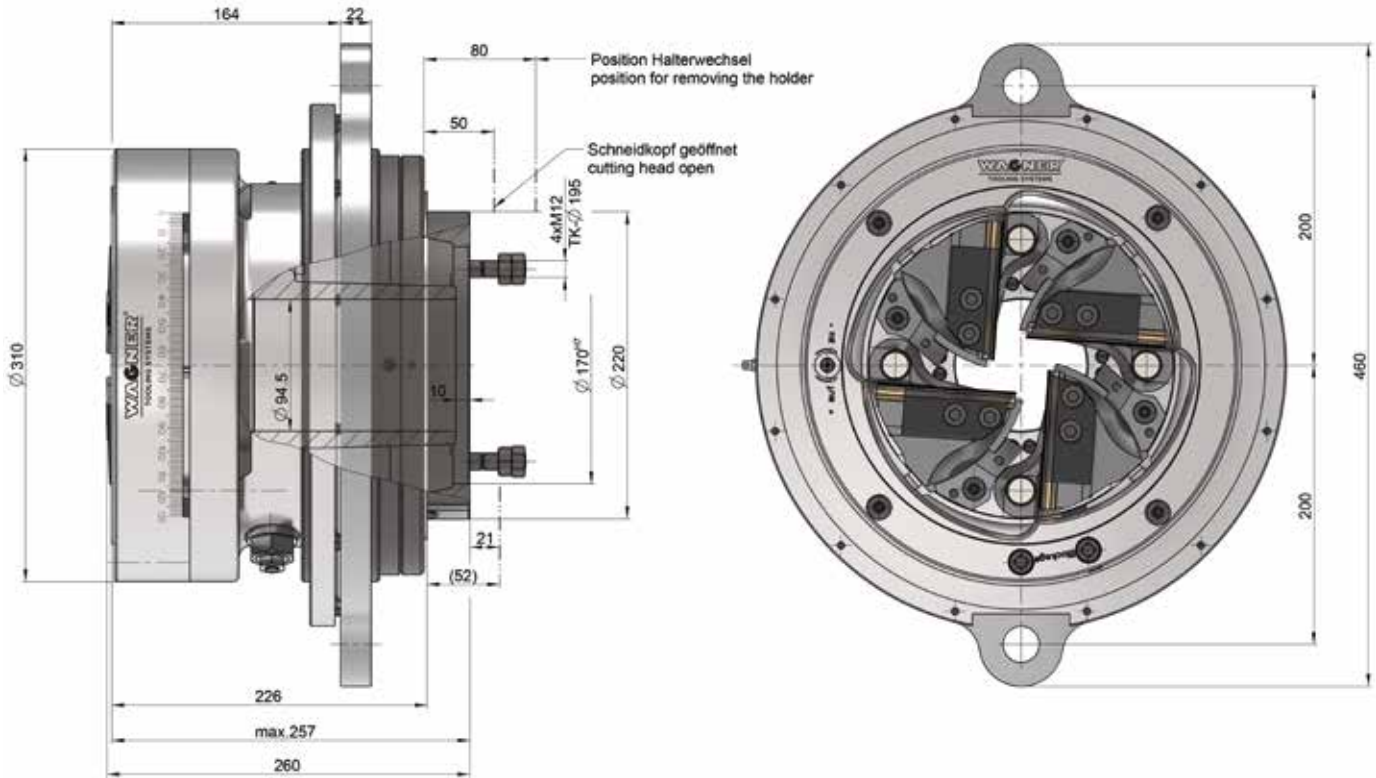
Control ring WDK-WEK





## Thread cutting system WEK-S8

Heavy duty rotating design



### Thread cutting system Heavy Duty WEK-S8

Weight	80 kg	
Working range pipe thread K1/16	R1/4–3" DIN EN ISO 10226 1/4-18–3-8NPT ANSI B1.20.1	
	<b>mm</b>	<b>inch</b>
Max. pitch	3.175	8 t.p.i.
Chaser holders	see table for holders	
Max. Thread length for tapered threads	44	1.732

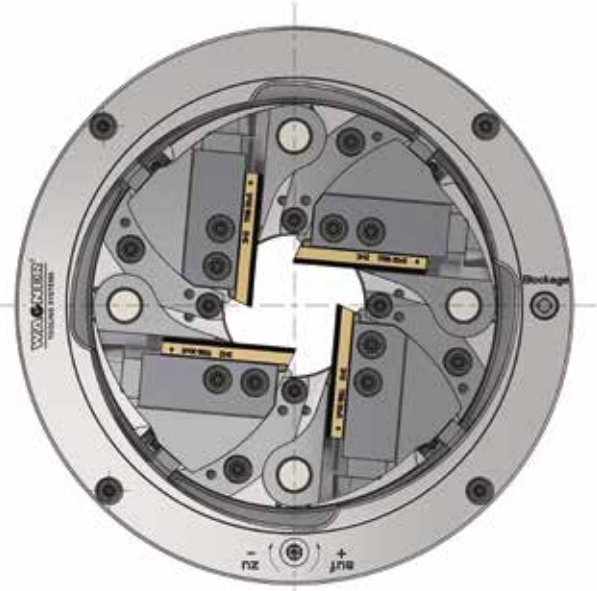
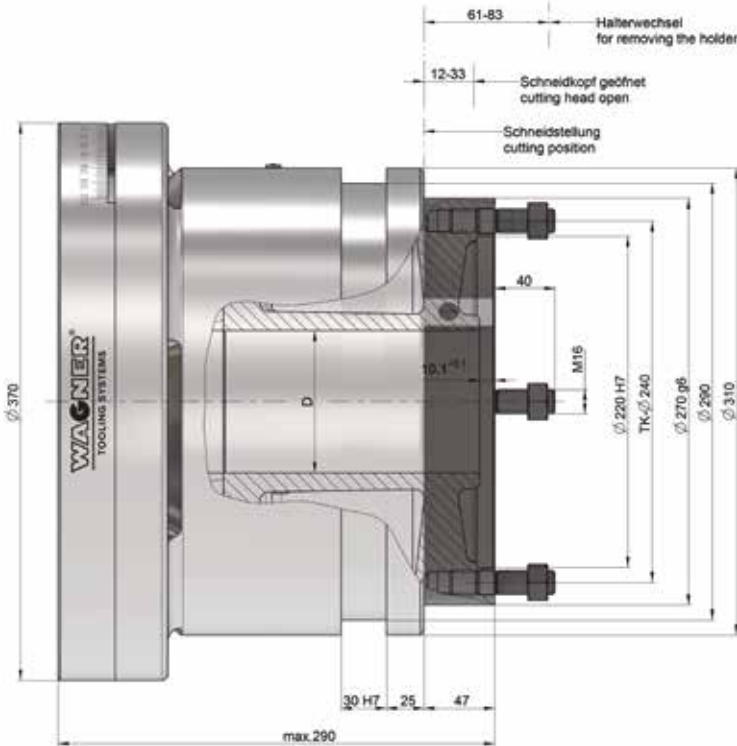
### Accessories:

Setting device with dial gauge



## Thread cutting system WGK-WHK

Heavy duty rotating design



WGK: D=94.5mm  
WHK: D=124.5mm

### Thread cutting system Heavy Duty WGK-WHK

Working range $\varnothing$					Weight
	Metric standard threads Metric fine threads	Whitworth and UN threads	Whitworth pipe threads and NPT threads	Trapezoidal and round threads $\varnothing$	
WGK	M12–M76	1/2–3 1/2"	G1/2–3" R1/2–3" 1/2-14–3-8NPT	12–62 mm 0,39–1,73"	90 kg
WHK	M12–M76 M18 x 1.5–M88 x 3	1/2–3 1/2"	G1/2–4" R1/2–3" 1/2-14–4-8NPT	12–62 mm 0,47–2,44"	90 kg

Chaser holders see table for holders

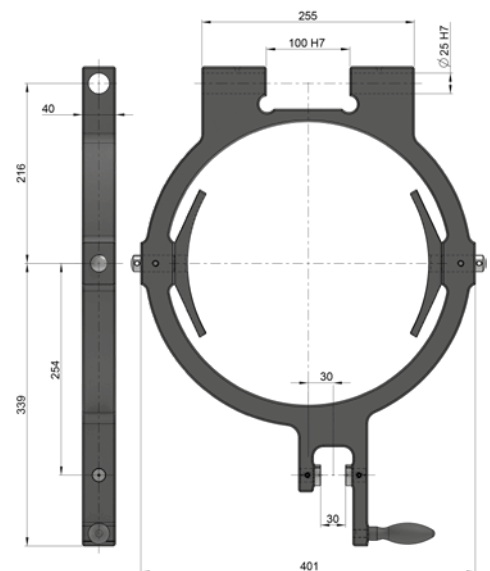
### Accessories:

Setting device with dial gauge



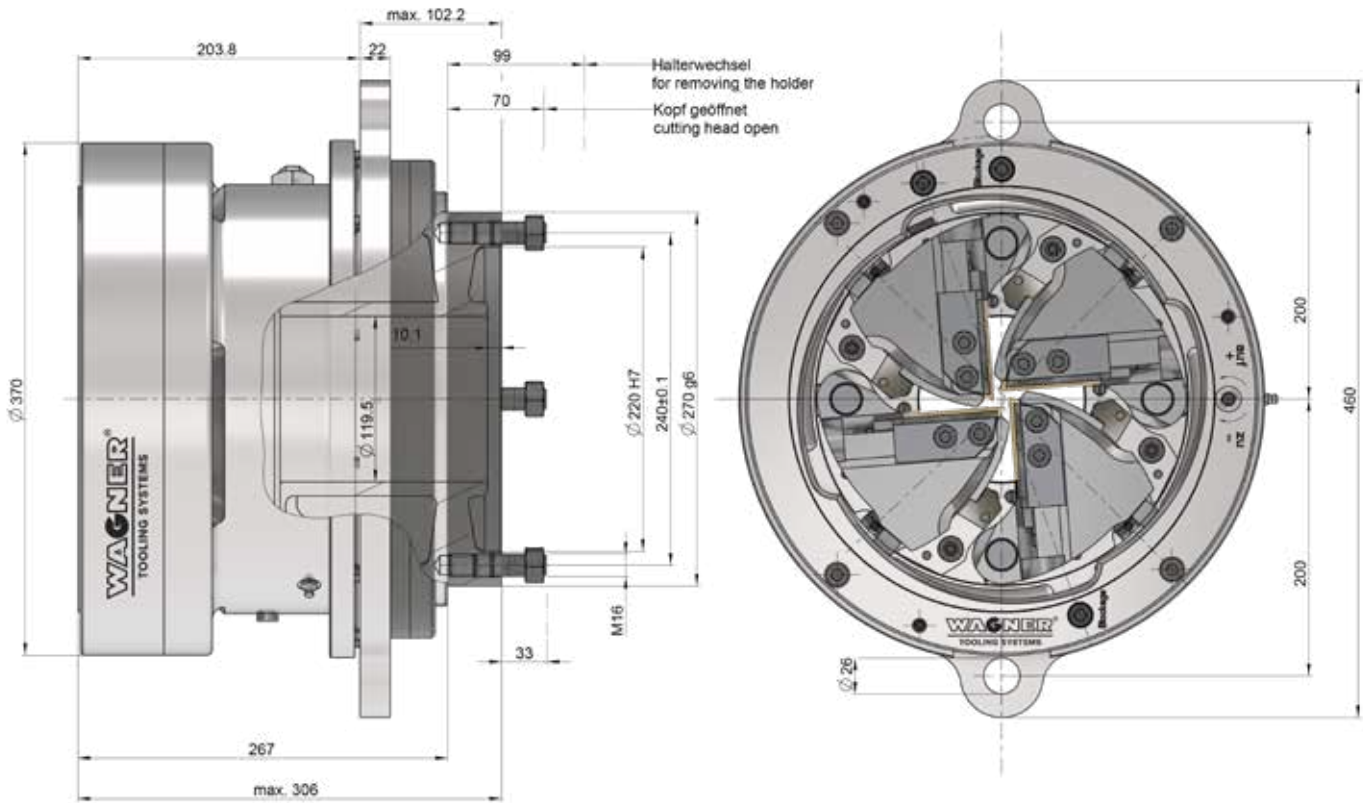
### Accessories:

Control ring WGK-WHK



## Thread cutting system WHK-S3

Heavy duty rotating design



### Thread cutting system Heavy Duty WHK-S3

Weight	135 kg	
Working range pipe thread K1/16	R1/2–4" DIN EN ISO 10226 1/2-14–4-8NPT ANSI B1.20.1	
	<b>mm</b>	<b>inch</b>
Max. pitch	3.175	8 t.p.i.
Chaser holders	see table for holders	
Max. thread length for tapered threads	63	2.48

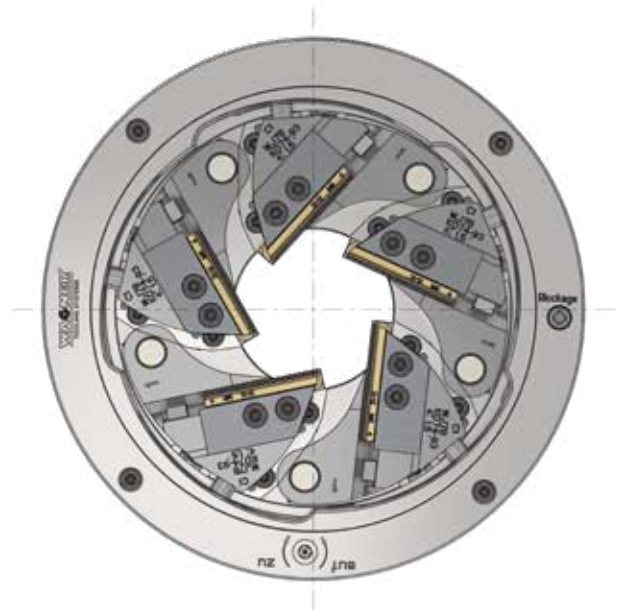
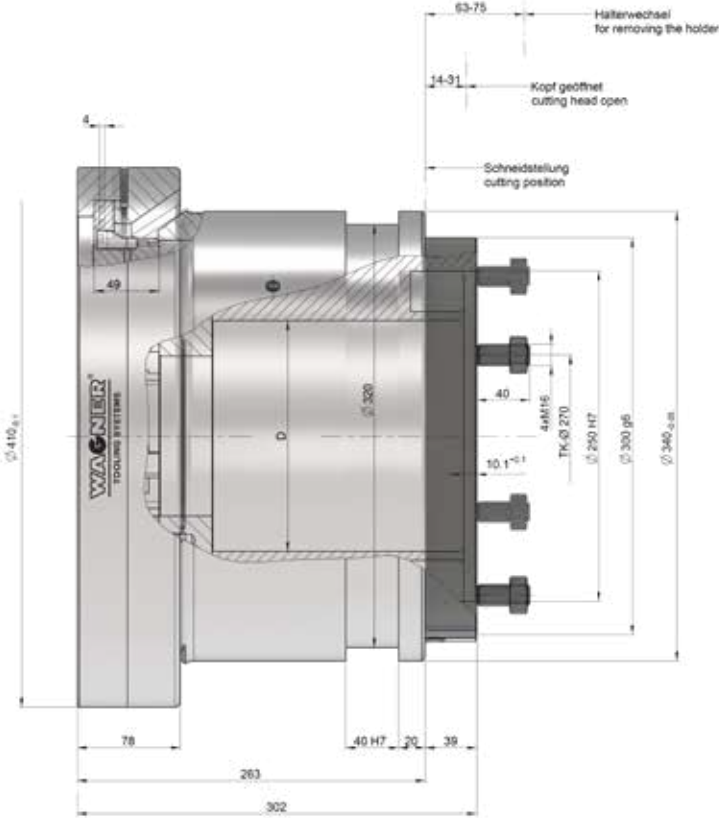
### Accessories:

Setting device with dial gauge



# Thread cutting system WJK-WKK

Heavy duty rotating design



WJK: D = 119.5  
WKK: D = 174.5

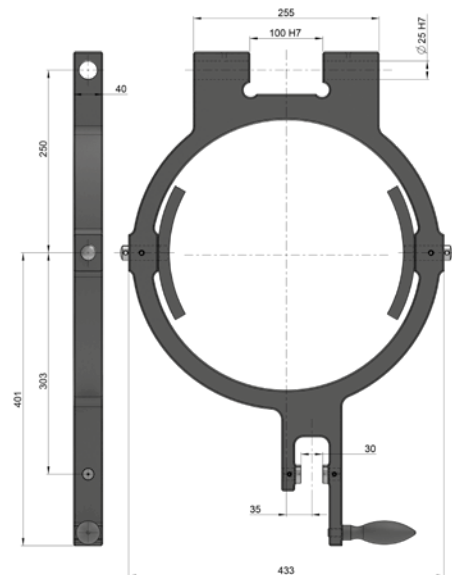
### Thread cutting system Heavy Duty WJK-WKK

Working range Ø		Weight			
	Metric standard threads Metric fine threads	Whitworth and UN threads	Whitworth pipe threads and NPT threads	Trapezoidal and round threads Ø	
WJK	M24–M100	1–4"	G1–4" R1–4" 1-11½–4-8NPT	24–90 mm 0.94–3.5"	140 kg
WKK	M24–M100 M30 × 1.5–M120 × 2	1–6"	G1"–G6" R1"–R6" 1-11½–6-8NPT	24–90 mm 0.94–3.5"	140 kg

Chaser holders see table for holders

### Accessories:

Control ring WJK-WKK



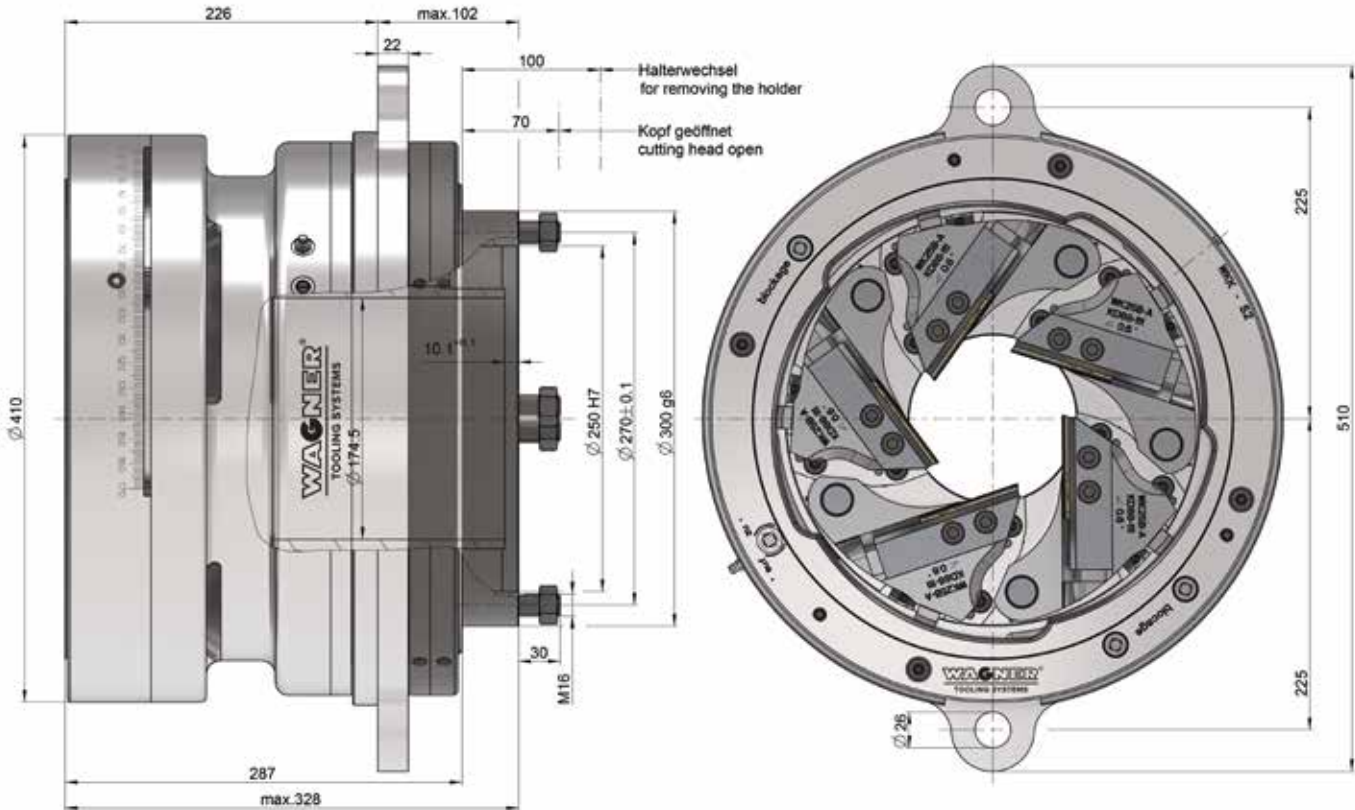
### Accessories:

Setting device with dial gauge



## Thread cutting system WKK-S4

Heavy duty rotating design



### Thread cutting system Heavy Duty WKK-S4

Weight	135 kg	
Working range pipe thread K1/16	R1-6" DIN EN ISO 10226 1-11.5-4-8NPT ANSI B1.20.1	
	<b>mm</b>	<b>inch</b>
Max. pitch	3.175	8 t.p.i.
Chaser holders	see table for holders	
Max. thread length for tapered threads	57	2.244

### Accessories:

Setting device with dial gauge

